

Studio Six

Specification

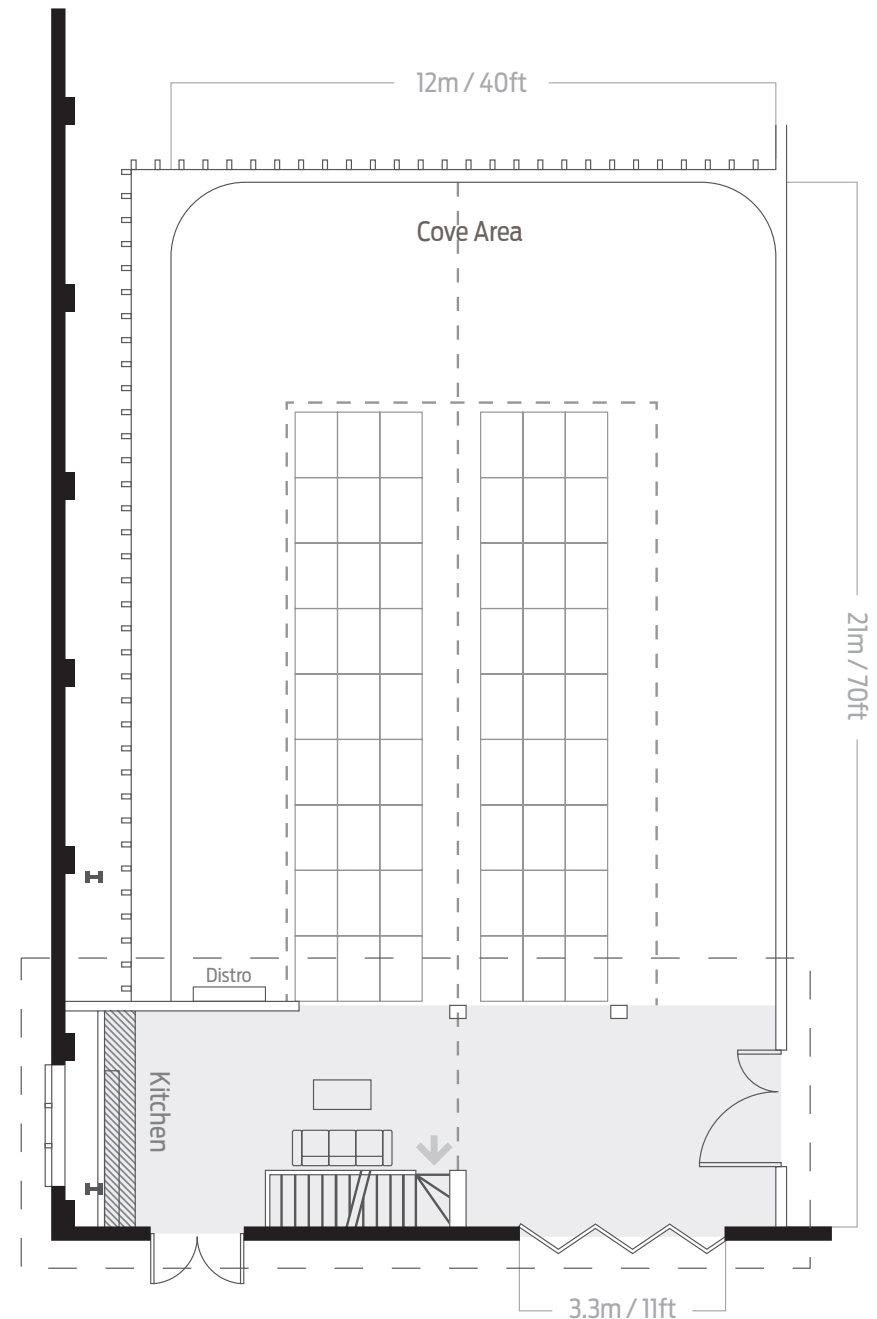
Studio	m	ft
Area of studio cove (m ² /ft ²)	190 m ²	2045 ft ²
Studio length	21	70
Cove length (wall to wall)	17	56
Cove width (wall to wall)	12	40
Cove length (flat floor)	15	49.5
Cove width (flat floor)	10	32.5
Ceiling return	4.5	15

Production/Working Area	m	ft
Length	4.5	15
Width	13.5	44
Area Ground / First Floors	58 / 58	625 / 625

Studio Entrance	m	ft
External shutter height	2.8	9
External shutter width	3.3	11
Internal door height	2.4	8
Internal door width	1.2	4

■ Park Royal Studios,
1 Barretts Green Road, London. NW10 7AE

■ +44 (0)20 8965 9778 +44 (0)20 8963 1056
info@parkroyalstudios.com www.parkroyalstudios.com



Ground Floor Studio

Studio Six

Lighting Rigging & Floating Ceiling Specification

Lighting Rigging

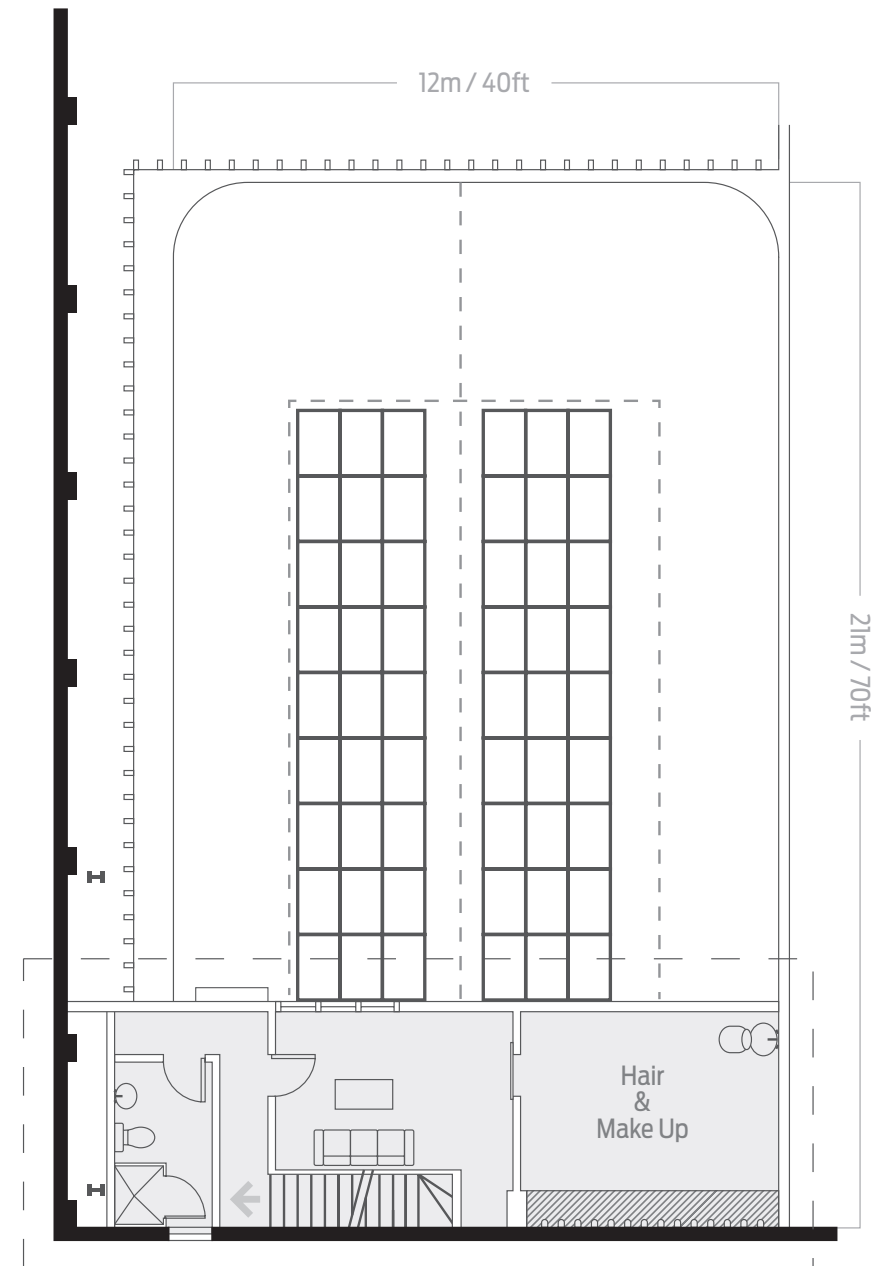
	m	ft
Distance from back of wall	4.5	14
Height	6.4	21
Width	3.5 / 2.5	12 / 8
Length	11.5	38

Useful Information

- 'U' shaped infinity cove
- Drive-in Access
- C form: 63, 32, 16amp outlets
- 200 amps per phase
- Fixing ceiling return
- Scaffold Rig
- Client Area
- Kitchenette facilities
- 12" Powered speakers with auto jack import
- Production facilities
- Mezzanine level including:
- Male/female shower WC/facilities
- Air conditioned styling and makeup facilities

■ Park Royal Studios,
1 Barretts Green Road, London. NW10 7AE

■ +44 (0)20 8965 9778 +44 (0)20 8963 1056
info@parkroyalstudios.com www.parkroyalstudios.com



First Floor Mezzanine