

Studio Five

Specification

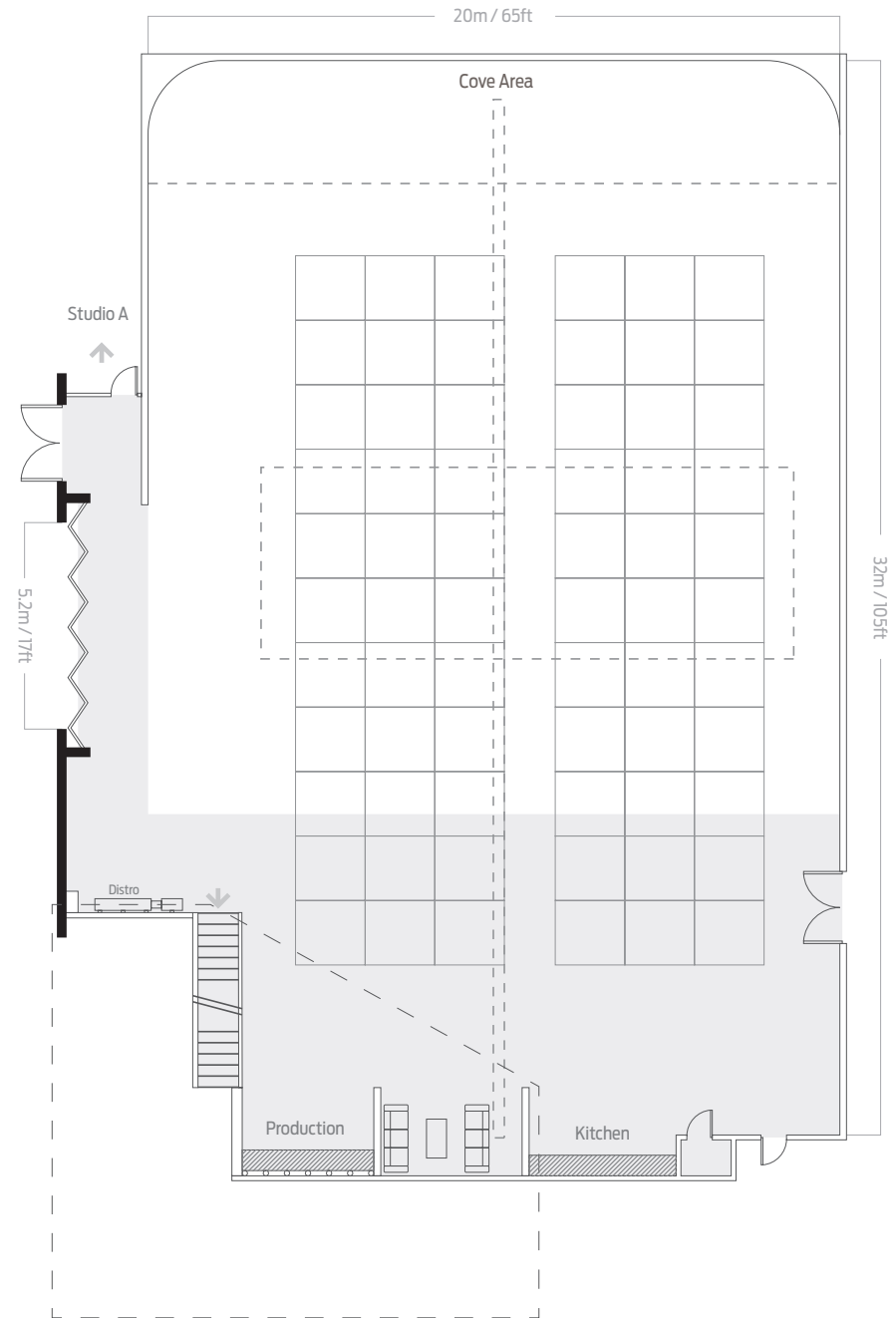
Studio	m	ft
Area of studio cove (m ² /ft ²)	480 m ²	5165 ft ²
Studio length	32	105
Cove length (wall to wall)	23	75
Cove width (wall to wall)	20	65
Cove length (flat floor)	21.5	70
Cove width (flat floor)	17.5	57
Ceiling return	3.5	11

Production/Working Area	m	ft
Length	7.5	25
Width	17	56
Area Ground / First Floors	134 / 83	440 / 272

Studio Entrance	m	ft
External shutter height	4.6	15
External shutter width	5.2	17
Internal door height	2.4	8
Internal door width	1.2	4

■ Park Royal Studios,
1 Barretts Green Road, London. NW10 7AE

■ +44 (0)20 8965 9778 +44 (0)20 8963 1056
info@parkroyalstudios.com www.parkroyalstudios.com



Ground Floor Studio

Studio Five

Lighting Rigging & Floating Ceiling Specification

Lighting Rigging

	m	ft
Distance from back of wall	5.5	18
Height	6	19.8
Width	6 / 6	20 / 20
Length	20.4	67

Floating Ceiling

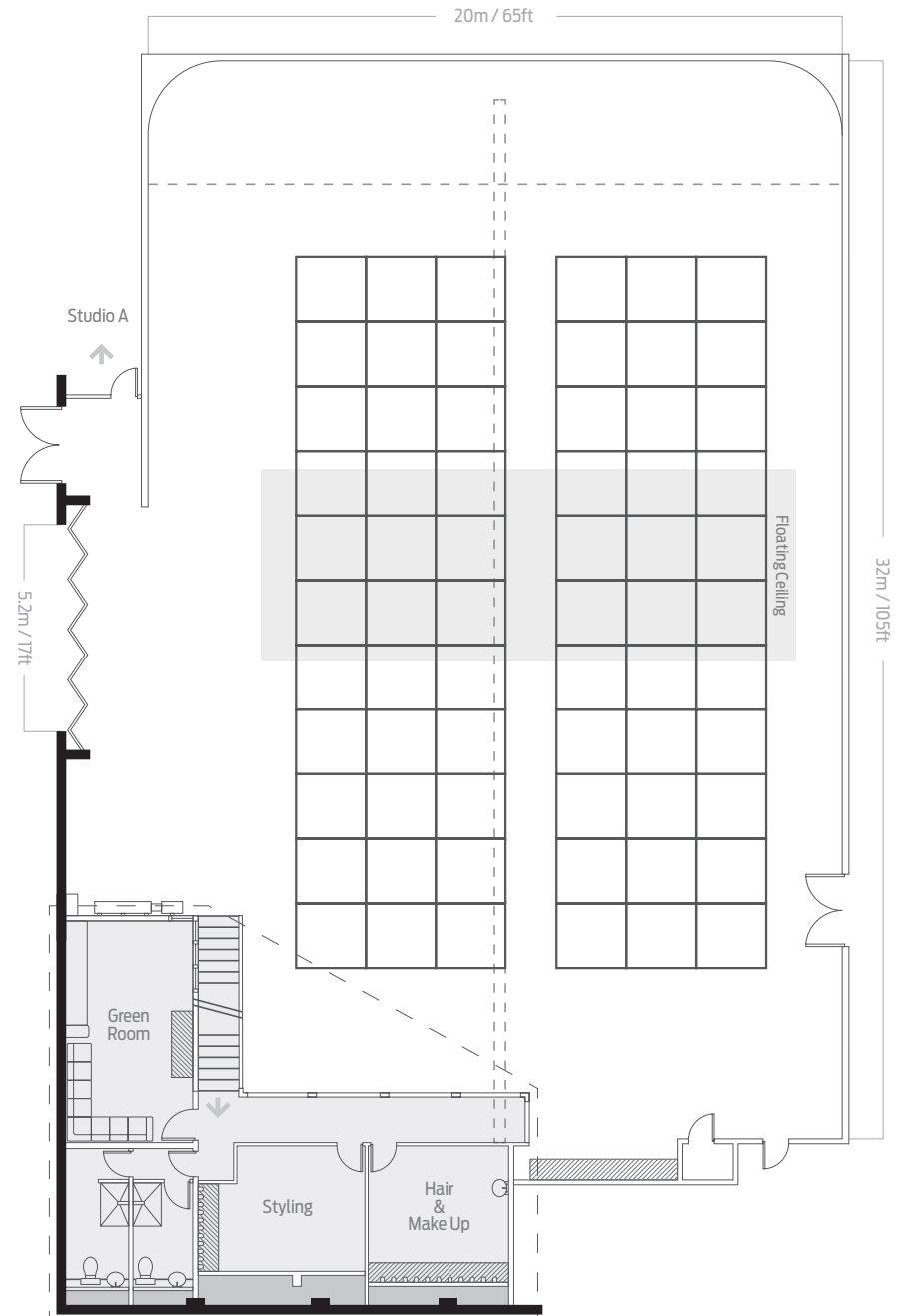
	m	ft
Width	15.3	50
Length	5.5	18

Useful Information

- 'U' shaped infinity cove
- Drive-in Access
- C form: 63, 32amp single phase outlets (x12 of each)
- C form: 63amp 3Ø outlet (x1) (3Ø+N+)
- .2 'BAC' female distribution unit (3Ø, 200 amps per phase)
- Scaffold Rig
- Built in 12" powered speakers with audio jack input
- Kitchenette facilities
- Green room
- Production facilities
- Mezzanine level including:
 - Male/female shower WC/ facilities
 - Air conditioned styling and makeup facilities
 - Interlinks with Studio A

■ Park Royal Studios,
1 Barretts Green Road, London. NW10 7AE

■ +44 (0)20 8965 9778 +44 (0)20 8963 1056
info@parkroyalstudios.com www.parkroyalstudios.com



First Floor Mezzanine