



**Studio Four**  
Specification

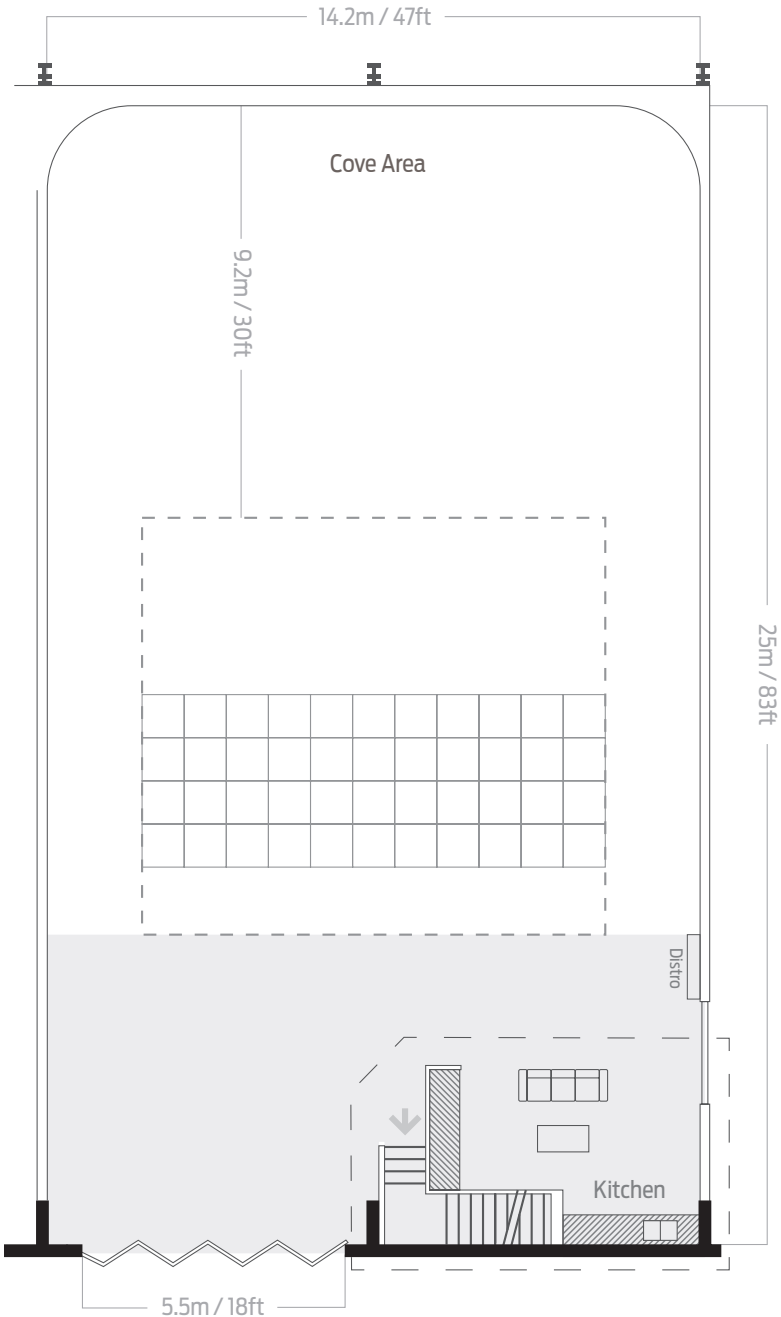
Studio	m	ft
Area of studio cove (m <sup>2</sup> /ft <sup>2</sup> )	260 m <sup>2</sup>	2800 ft <sup>2</sup>
Studio length	25	83
Cove length (wall to wall)	18.5	61
Cove width (wall to wall)	14.2	47
Cove length (flat floor)	17	59.5
Cove width (flat floor)	12	39.5
Ceiling return	9.2	30

Production/Working Area	m	ft
Length	6.7	22
Width	14.2	47
Area Ground / First Floors	94 / 27	1010 / 290

Studio Entrance	m	ft
External shutter height	4	14
External shutter width	5.5	18
Internal door height	2.6	9
Internal door width	1.8	6

■ Park Royal Studios,  
1 Barretts Green Road, London. NW10 7AE

■ +44 (0)20 8965 9778 +44 (0)20 8963 1056  
info@parkroyalstudios.com www.parkroyalstudios.com



**Ground Floor** Studio



### Studio Four

Lighting Rigging & Floating Ceiling Specification

Lighting Rigging	m	ft
Distance from back of wall	13	46
Height	5.5	18
Width	10	33
Length	3.8	12.5

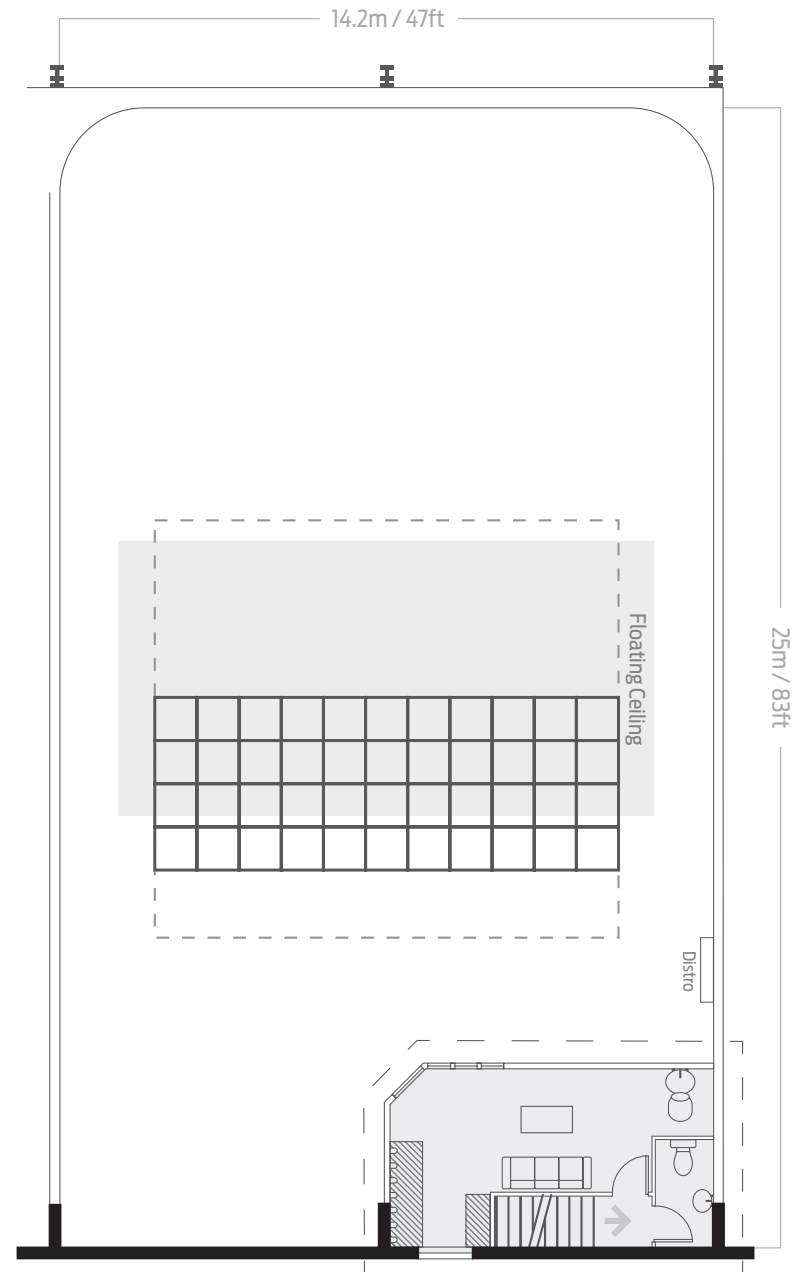
Floating Ceiling	m	ft
Width	15.5	18
Length	5.7	18.7

### Useful Information

- 'U' shaped infinity cove
- Drive-in Access
- C form: 63, 32, 16amp outlets
- 200 amps per phase
- Large fixed ceiling return
- Scaffold Rig
- Remote control floating ceiling
- Client Area
- Kitchenette facilities
- 12" Powered speakers with auto jack import
- Production facilities
- Mezzanine level including:
- WC/facilities
- Air conditioned styling and makeup facilities

■ Park Royal Studios,  
1 Barretts Green Road, London. NW10 7AE

■ +44 (0)20 8965 9778 +44 (0)20 8963 1056  
info@parkroyalstudios.com www.parkroyalstudios.com



**First Floor** Mezzanine