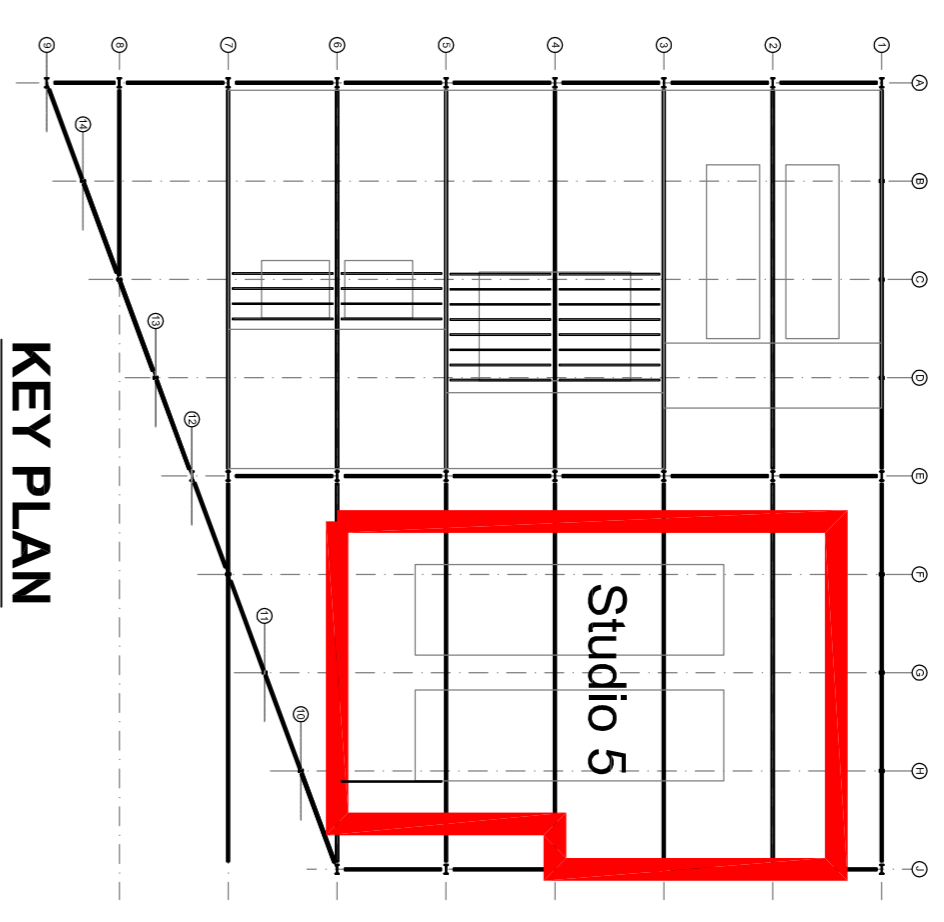
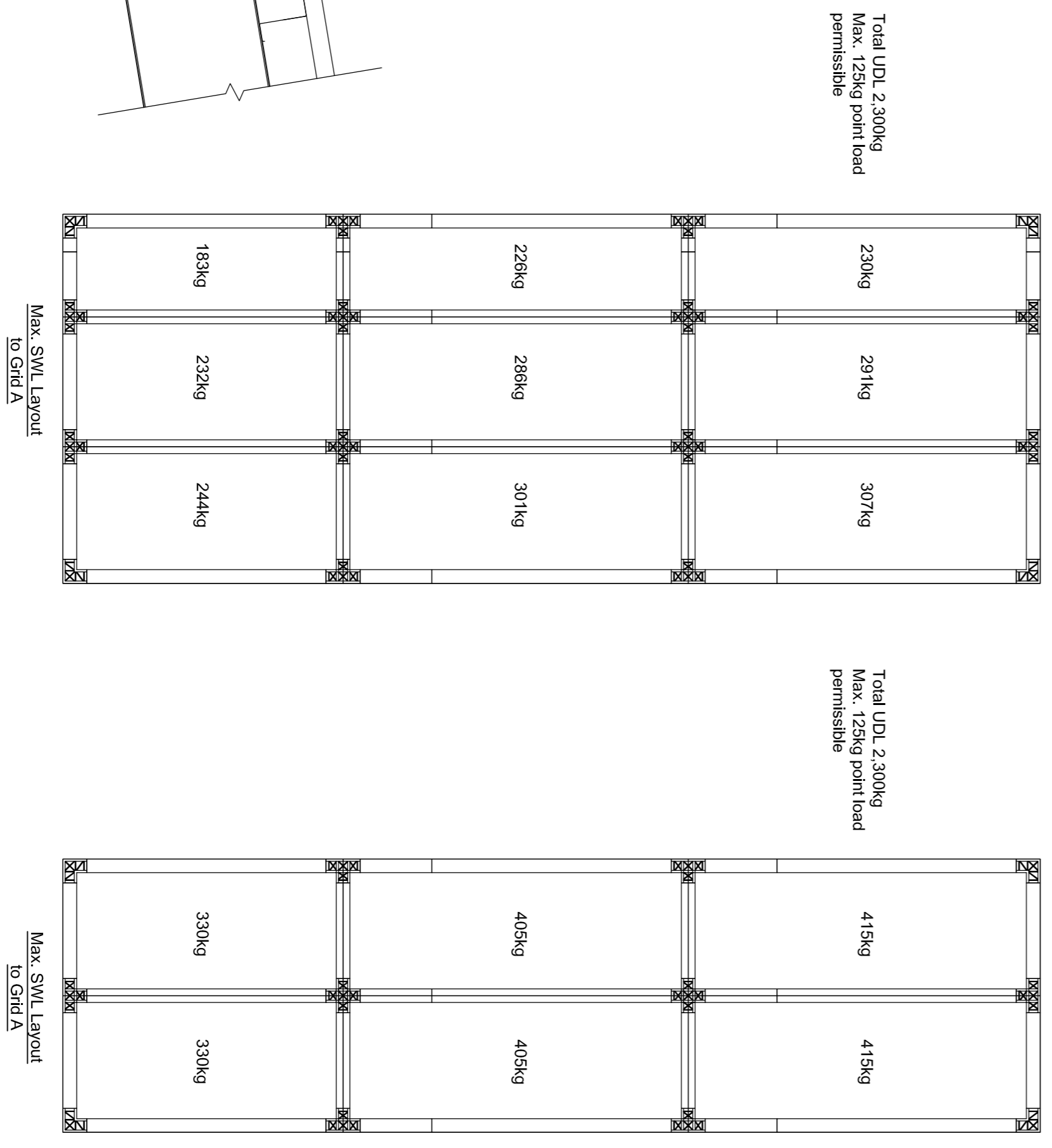
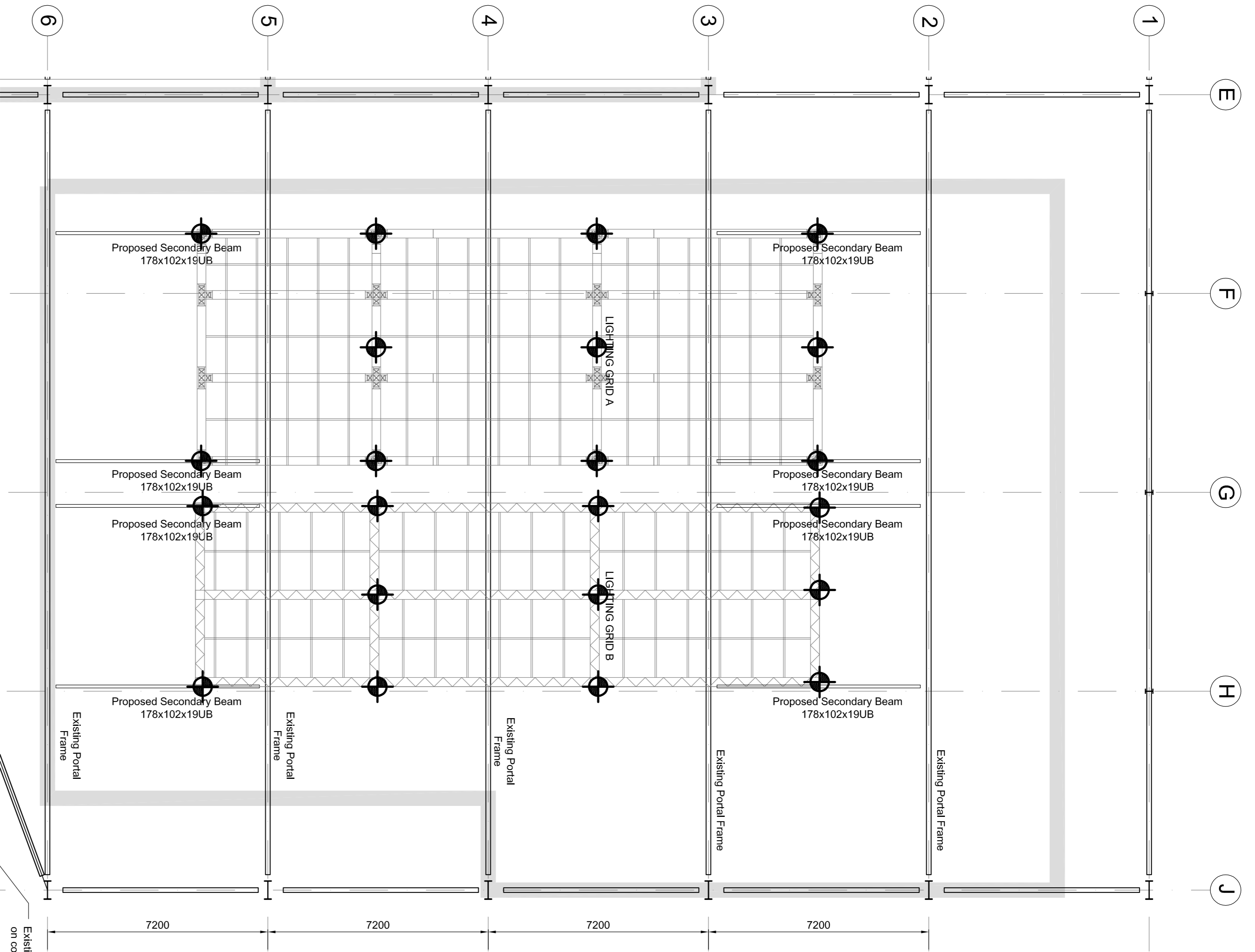
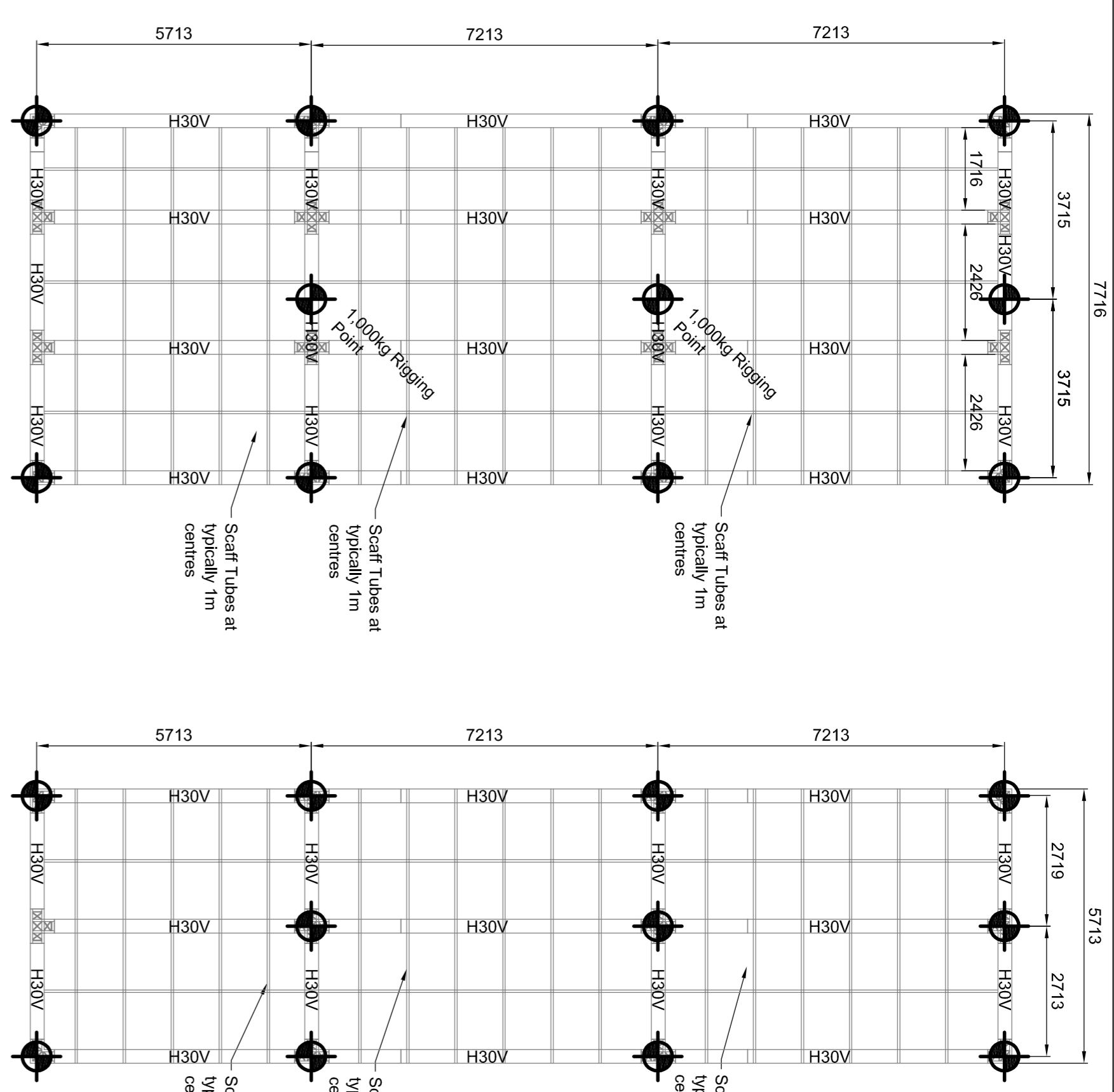


- notes :**
1. IF THIS DRAWING HAS BEEN RECEIVED ELECTRONICALLY IT IS THE RECEIVER'S RESPONSIBILITY TO PRINT THE DOCUMENT TO THE CORRECT SCALE
  2. ALL DIMENSIONS ARE IN MILLIMETRES UNLESS STATED OTHERWISE. IT IS RECOMMENDED THAT INFORMATION IS NOT SCALED OFF THIS DRAWING
  3. THIS DRAWING SHOULD BE READ IN CONJUNCTION WITH ALL OTHER RELEVANT DRAWINGS AND SPECIFICATIONS



Denotes rigging points  
(500kg rated UNO)



Each Lighting Grid to Support  
Maximum of 2,300kg  
Total SWL 4,600kg



Client:  
**Rigging Services**

Project:  
**Park Royal Studios**

Title:  
**Studio 5  
Proposed Lighting Grid Layout**

P4	Notes amended	ML	09/02/18
P3	Orientation of grid amended	ML	31/01/18
P2	Revise to suit new grid dimensions	ML	19/01/18
P1	Preliminary Issue (Appendix A to Report)	ML	30/08/17
rev	amendments	by	date

Drawing Status: <b>Preliminary</b>	Date Created: <b>29.08.17</b>	Drawing Scale: <b>N.T.S</b>
Project Leader: <b>LDC</b>	Drawn By: <b>ML</b>	Initial Review: <b>LDC</b>
<b>SP-469 / A1 / 003</b>	<b>P4</b>	