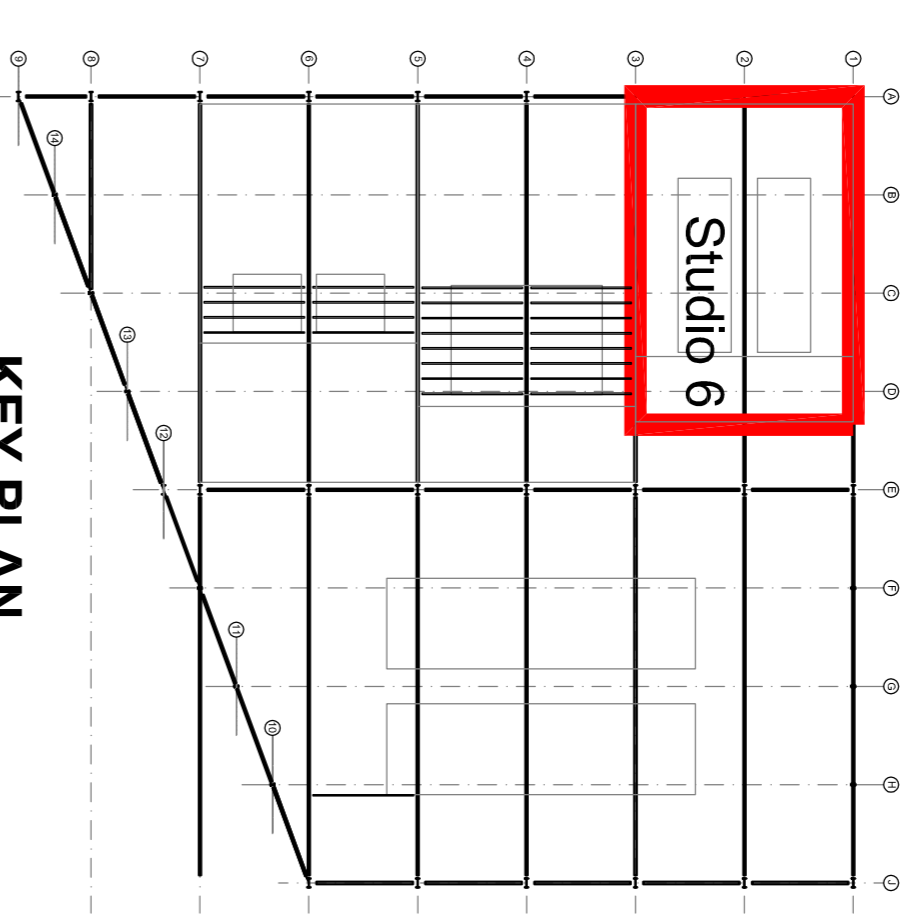
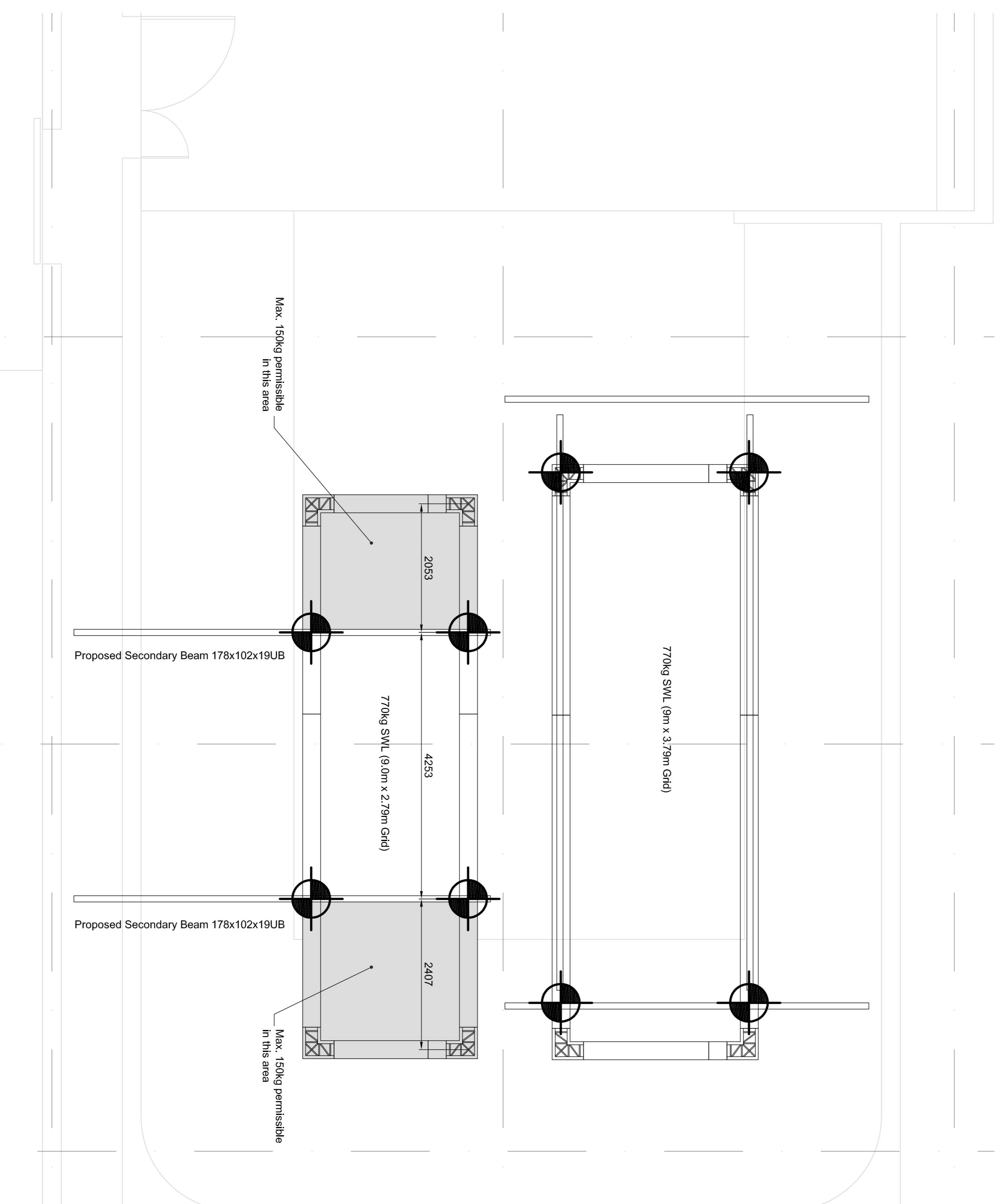


- notes :**
1. IF THIS DRAWING HAS BEEN RECEIVED ELECTRONICALLY IT IS THE RECIPIENT'S RESPONSIBILITY TO PRINT THE DOCUMENT TO THE CORRECT SCALE
 2. ALL DIMENSIONS ARE IN MILLIMETRES UNLESS STATED OTHERWISE. IT IS RECOMMENDED THAT INFORMATION IS NOT SCALED OFF THIS DRAWING
 3. THIS DRAWING SHOULD BE READ IN CONJUNCTION WITH ALL OTHER RELEVANT DRAWINGS AND SPECIFICATIONS



KEY PLAN



PROPOSED STUDIO 6 RIGGING LAYOUT

Each Lighting Grid to Support Maximum of 770kg (UDL)
 Max. of 125kg point load
 Total SWL 1,540kg

P4	Scale Amended	ML	09/02/18
P3	Frame arrangement updated	ML	31/01/18
P2	Frame arrangement updated	ML	30/01/18
P1	Preliminary Issue (Appendix A to Report)	ML	30/08/17
rev	amendments	by	date



Client:
Rigging Services
 Project:
Park Royal Studios

Title:
**Studio 6
 Proposed Lighting Grid Layout**

Drawing Status: Preliminary Date Created: 29.08.17 Drawing Scale: N.T.S

SP-469 / A1 / 004 P4

Project Leader: LDC Drawn By: ML Initial Review: LDC