

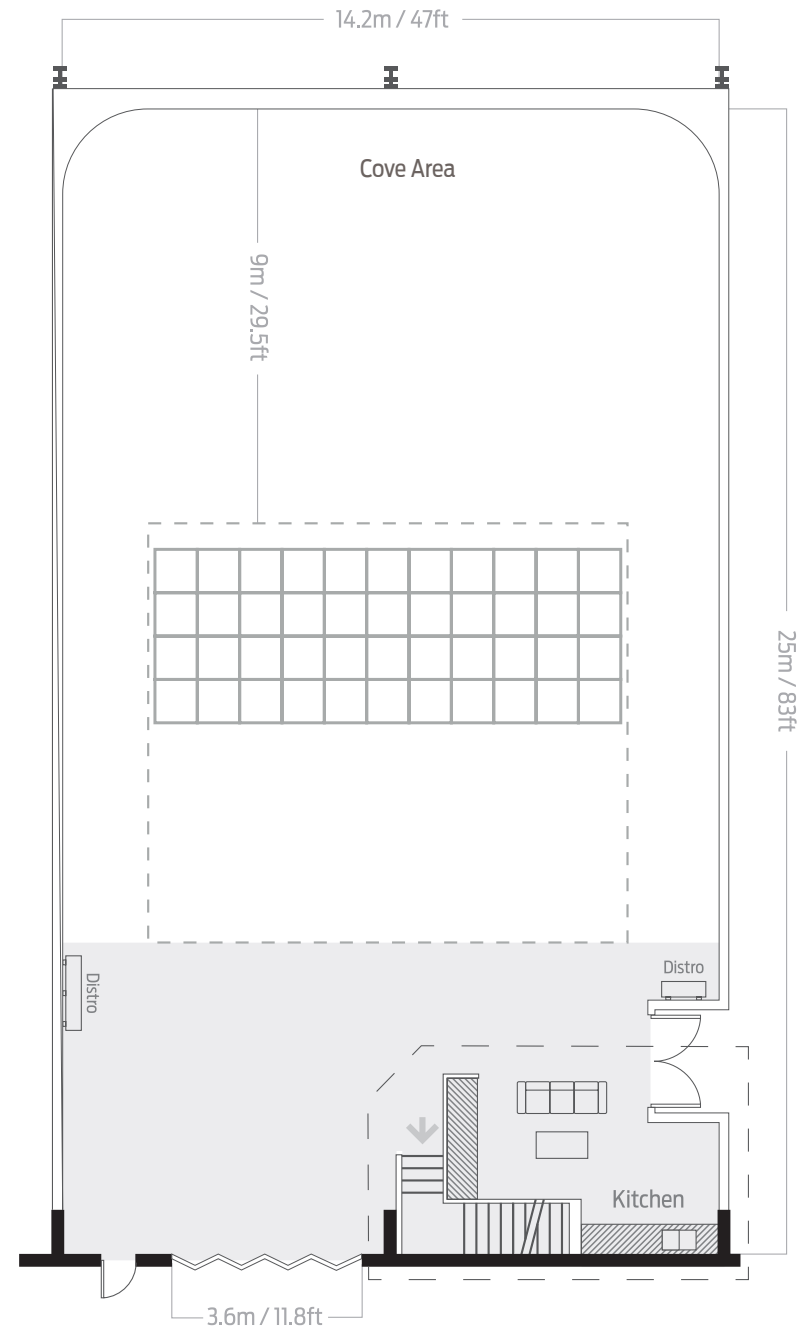
## Studio Four

### Specification

Studio	m	ft
Area of studio cove (m <sup>2</sup> /ft <sup>2</sup> )	260 m <sup>2</sup>	2800 ft <sup>2</sup>
Studio length	25	83
Cove length (wall to wall)	18.5	61
Cove width (wall to wall)	14.2	47
Cove length (flat floor)	17	59.5
Cove width (flat floor)	12	39.5
Ceiling return	9.2	30

Production/Working Area	m	ft
Length	6.7	22
Width	12	39.3

Studio Entrance	m	ft
External shutter height	4	14
External shutter width	3.6	11.8
Internal door height	2.3	7.5
Internal door width	2.2	7.2





**Studio Four**

Lighting Rigging & Floating Ceiling Specification

**Lighting Rigging**

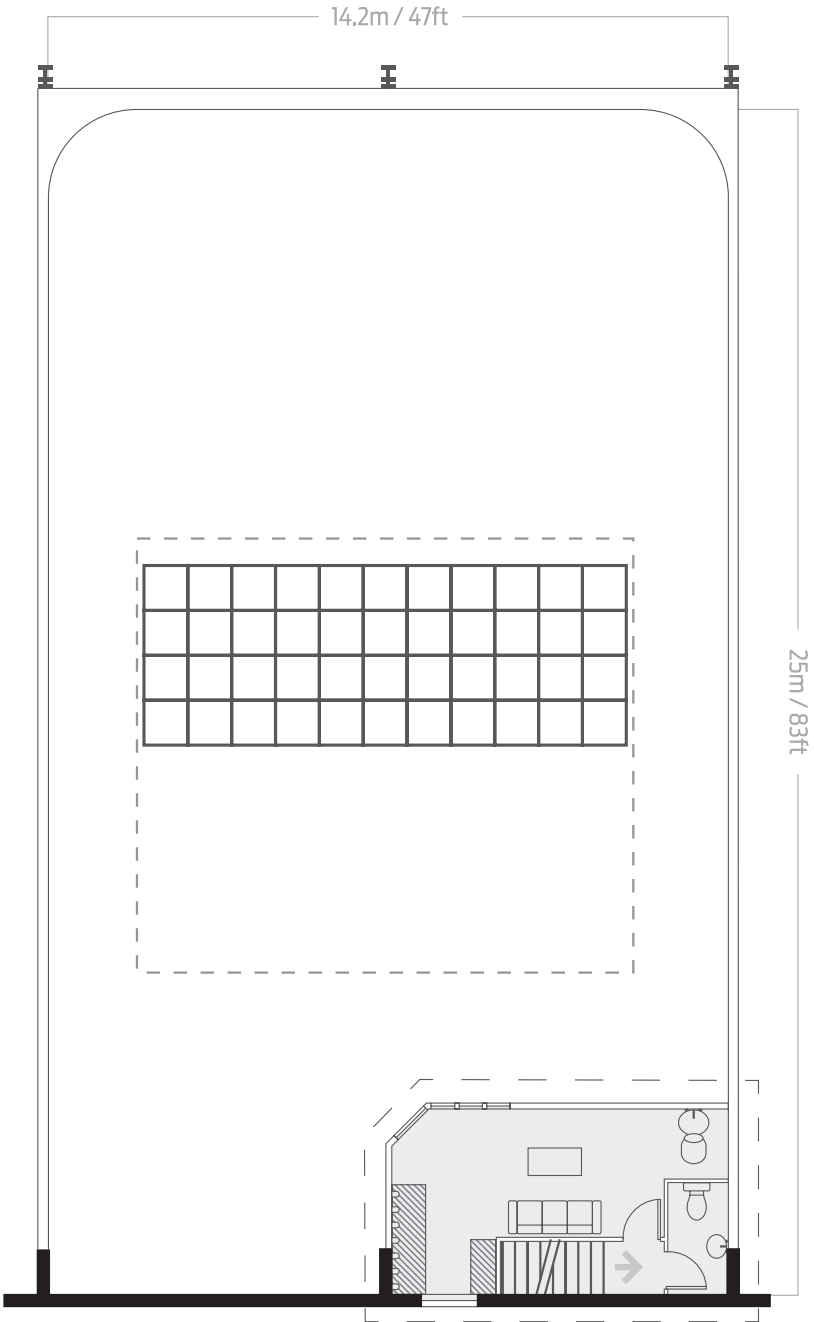
	m	ft
Distance from back of wall	9	29.5
Height	5.5	18
Width	10	33
Length	4.5	14.7

**Useful Information**

- 'U' shaped infinity cove
- Drive-in Access
- Large fixed ceiling return
- Scaffold Rig
- Remote control floating ceiling
- Client Area
- Kitchenette facilities
- Production facilities
- WC/facilities
- Air conditioned styling and makeup facilities
- 6 x 63amp single phase cee-form socket
- 6 x 32amp single phase cee-form socket
- 1 x 63amp 3 phase (5 pin) cee-form socket
- 1 x 32amp 3 phase (5 pin) cee-form socket
- 1 x 200amp 3 phase power locks

Park Royal Studios,  
1 Barretts Green Road, London. NW10 7AE

+44 (0)20 8965 9778  
info@parkroyalstudios.com www.parkroyalstudios.com



**First Floor** Mezzanine